

PRICE LIST

CREATIVE
aesthetics

www.creativeaesthetics.co.uk

MICROBLADING

CONSULTATION

60 MINUTES

NO CHARGE

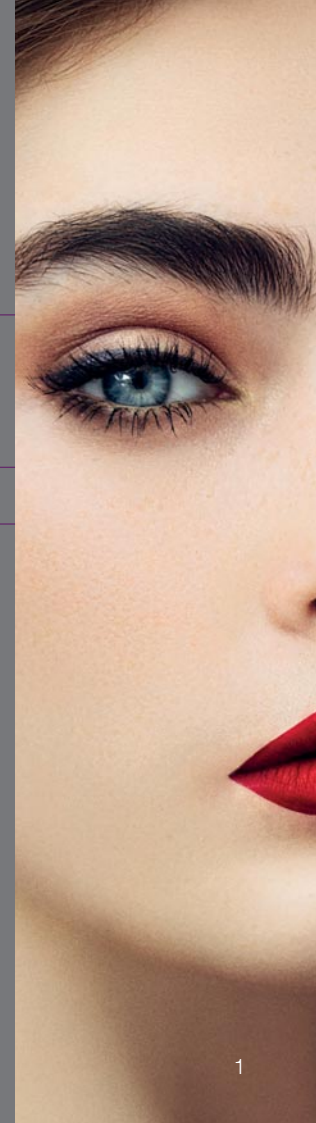
EYEBROWS

NATURAL HAIR STROKES BROW

£300

HAIR STROKE AND SHADING

£350



SEMI-PERMANENT MAKE-UP

CONSULTATION

60 MINUTES

NO CHARGE

EYEBROWS

SCARS IN EYEBROWS

£100

POWDERED BROW

£300

HAIR STROKE SIMULATION FOR EYEBROWS

£350

EYE CONTOURS

LASH ENHANCEMENT (TOP)

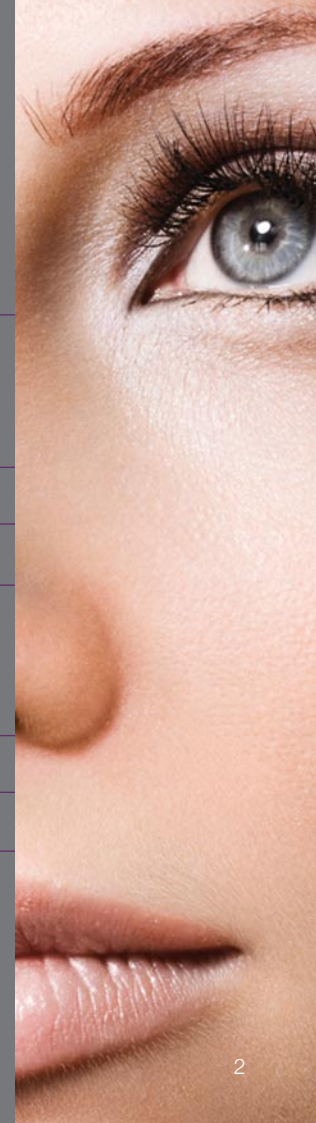
£250

LASH ENHANCEMENT (TOP AND BOTTOM)

£300

LASH ENHANCEMENT PLUS EYELINER (TOP)

£300



SEMI-PERMANENT MAKE-UP

LIP CONTOURS

LIP CONTOUR / LINER

£300

LIP CONTOUR WITH BLUSH

£350

FULL LIP COLOUR

£450

BEAUTY SPOTS

£80

All prices above include a top up within 3 months of your first procedure.

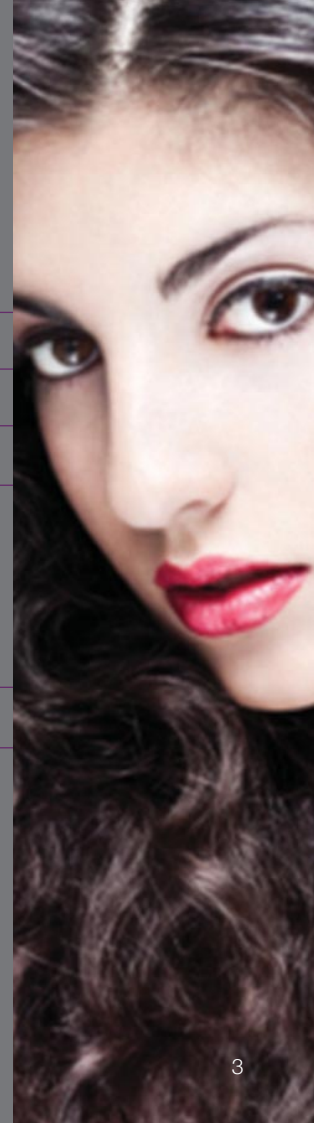
MAINTENANCE TREATMENT

COLOUR BOOST WITHIN 12 MONTHS - 1 TREATMENT

£140

COLOUR BOOST WITHIN 18 MONTHS - 2 TREATMENTS

£200



BROW TREATMENTS

HD BROWS - THE MUST HAVE CELEBRITY TREATMENT TO DRAMATICALLY ENHANCE YOUR BROWS!

HD Brows is a high-precision procedure that transforms your eyebrows into their perfect shape, dramatically enhancing your facial features. Whoever you are, whatever the state of your eyebrows, HD Brows puts celebrity beauty within your reach. The treatment consists of seven unique procedures that are performed by highly trained and skilled HD Brows stylists. This isn't just shaping and tidying - HD Brows is eyebrow artistry.

HIGH DEFINITION BROWS

40-60 mins from

£30

To maintain your gorgeous new brows you'll need to repeat the HD Brows treatment after 4-6 weeks once your hairs have regrown and your colour has faded. Patch test required at least 24 hours prior to treatment.

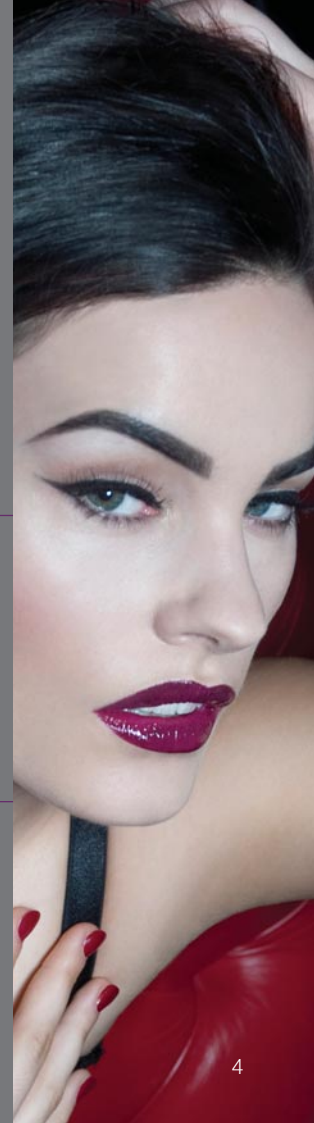
EYELASH TREATMENTS

MYSCARA

30 minutes

£40

The new revolution in semi-permanent Mascara, lasts up to 3 weeks. It won't smudge or budge. Safe and eye friendly lash coating.



EYELASH TREATMENTS

NOUVEAU LASHES

| | | |
|---------------------------------------------------|-------------|-----|
| FULL AND LAYERED LOOK EXTENSIONS | 120 minutes | £85 |
| HALF SET OF LASHES (ON OUTER CORNERS ONLY) | 60 minutes | £45 |
| LOWER LASHES (A SEPARATE APPOINTMENT IS REQUIRED) | 45 minutes | £30 |
| MAINTENANCE TREATMENT | 60 minutes | £40 |
| MAINTENANCE TREATMENT | 30 minutes | £20 |

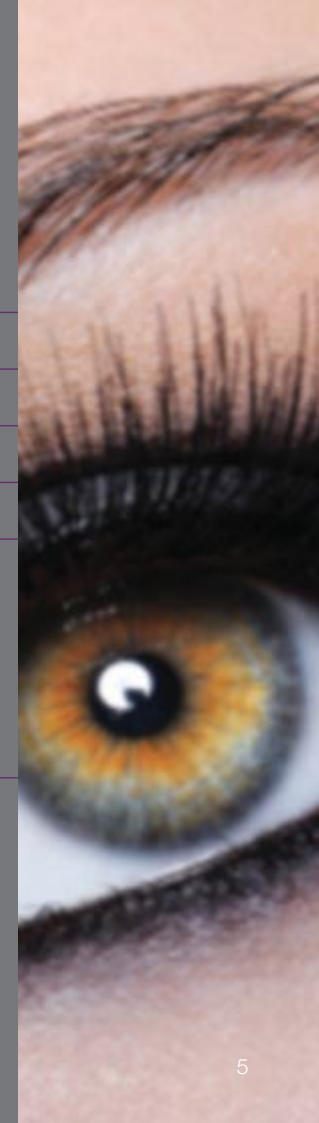
Nouveau Lashes are able to stand up to everyday living including exercise, swimming, sweating and showering. They will last 6 to 8 weeks with maintenance recommended every 2½ - 3 weeks. Our expert lash technician will advise you on the length and thickness most suitable for you.

Please ensure all make-up is removed prior to your arrival at the salon to maximise your treatment time.

LVL LASHES

60 minutes £65

If you don't need extensions then LVL lashes are for you. LVL Lashes has created a storm in the world of beauty by straightening rather than curling eyelashes to give you a fabulous wide-awake appeal that is completely natural. Patch test required at least 24 hours prior to treatment.



EYELASH TREATMENTS

LET'S GO™ EXPRESS LASHES

Individually applied lash extensions. Dubbed the “lash in a flash”, Let's Go lash extensions take just 20 minutes to apply. There is a fantastic range of styles to choose from and they last up to 2 weeks!

| | | |
|------------|------------|-----|
| TOP LASHES | 45 minutes | £50 |
|------------|------------|-----|

LET'S GO™ STRIP LASHES

If you want to change your lashes look daily, then you might want to try our exciting range of Let's Go strip lashes.

| | | |
|--------------|--------|----|
| STRIP LASHES | RETAIL | £8 |
|--------------|--------|----|

| | | |
|-------------------------------|------------|-----|
| STRIP LASHES PLUS APPLICATION | 15 minutes | £18 |
|-------------------------------|------------|-----|

NEW LET'S GO™ CLUSTER LASHES

Our fabulous cluster lashes offer you the chance to have a full and softer set of lashes that can last up to a week. A full set can be achieved in minutes. Great for weekends, parties and proms.

| | | |
|-------------|------------|-----|
| CORNER LIFT | 15 minutes | £15 |
|-------------|------------|-----|

| | | |
|------------------|------------|-----|
| NATURAL FULL SET | 30 minutes | £20 |
|------------------|------------|-----|

| | | |
|----------------------------------------------|------------|-----|
| COUTURE SET (ADDITIONAL INSERTS E.G. COLOUR) | 45 minutes | £30 |
|----------------------------------------------|------------|-----|



EYE TREATMENTS

| | | |
|--------------------------|------------|-----|
| EYELASH TINT | 30 minutes | £14 |
| EYEBROW TINT | 15 minutes | £12 |
| EYELASH AND EYEBROW TINT | 30 minutes | £24 |
| EYEBROW WAXING | 15 minutes | £8 |

MAKE UP

| | | |
|------------------------------------|--------------------------|------|
| BRIDAL MAKE-UP AND TRIAL | 2 sessions of 60 minutes | £100 |
| BRIDESMAIDS & MOTHERS (per person) | 45 minutes | £40 |
| MAKE-UP FOR SPECIAL OCCASIONS | 45 minutes | £40 |

SHELLAC

| | | |
|------------------|------------|-----|
| SHELLAC MANICURE | 60 minutes | £35 |
| SHELLAC PEDICURE | 60 minutes | £45 |

Combines the ease of polish with the permanence of gels. Shellac is UV cured. Removal takes only 10 minutes.



GELERATION

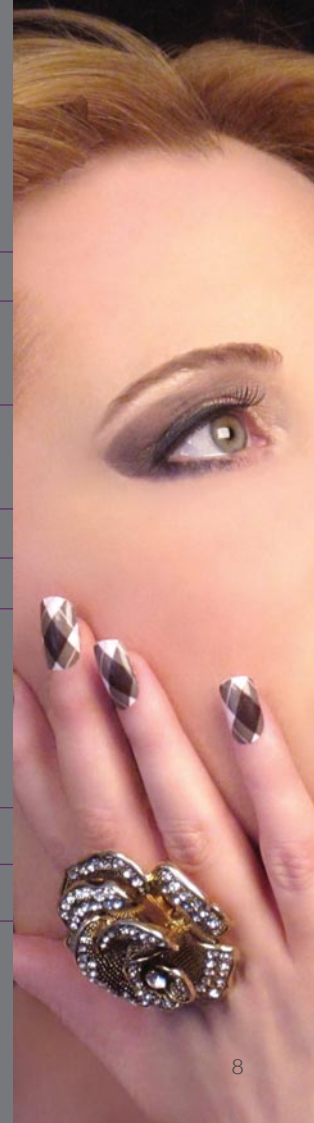
| | | |
|-------------------------------------------------------------|------------|-----|
| GELERATION MANICURE | 60 minutes | £35 |
| GELERATION | 60 minutes | £40 |
| applied with builder gel to strengthen weak or uneven nails | | |
| GELERATION | 90 minutes | £45 |
| with nail extensions | | |
| GELERATION NAIL REPAIR (within manicure) | | £5 |
| NAIL REPAIR ONLY | 15 minutes | £10 |
| GELERATION PEDICURE | 60 minutes | £45 |

MINX

| | | |
|--------------------------------------------|------------|-----|
| APPLICATION TO HANDS | 50 minutes | £30 |
| APPLICATION TO HANDS INCLUDING GEL OVERLAY | 60 minutes | £35 |
| APPLICATION TO FEET | 50 minutes | £35 |

Treatment includes cuticle pushback, nail cut and shape

The ultimate fashion weapon. Visit www.minxmynails.co.uk for designs.



NAIL EXTENSIONS

ACRYLIC

| | | |
|---------------------------------------------|------------|-----|
| FULL SET OF FRENCH - PINK AND WHITE ACRYLIC | 90 minutes | £42 |
| FULL SET OF ACRYLIC TIPS (natural) | 90 minutes | £38 |
| WHITE TIP AND OVERLAY | 60 minutes | £35 |
| NATURAL NAIL OVERLAY | 45 minutes | £30 |

INFILLS

| | | |
|---------------------------------|------------|-----|
| FRENCH PINK AND WHITE | 75 minutes | £35 |
| NATURAL | 45 minutes | £28 |
| INDIVIDUAL TIP/SCULPTURE/REPAIR | 10 minutes | £6 |
| SOAK OFF, TIDY AND POLISH | 60 minutes | £25 |

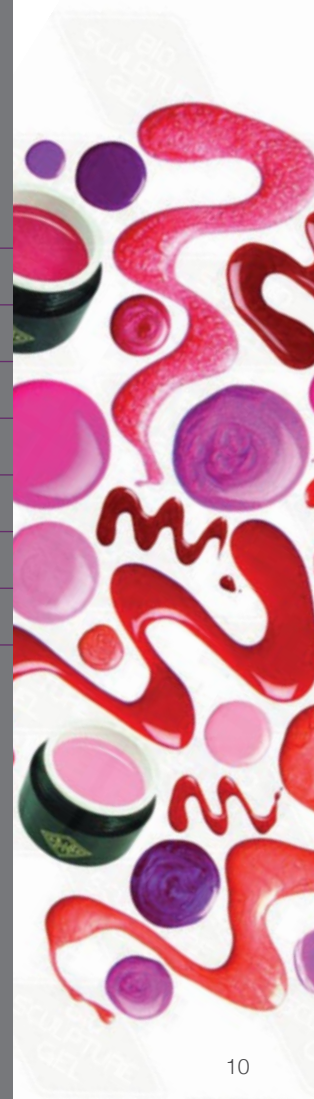
Creative nail design products. Award winning system from the USA.



BIOSCULPTURE GEL

| | | |
|--------------------------------------|------------|-----|
| FULL SET GEL TIPS (colour/french) | 90 minutes | £45 |
| WHITE TIPS AND GEL OVERLAY | 75 minutes | £40 |
| INFILLS CLEAR | 45 minutes | £30 |
| INFILLS COLOUR/FRENCH | 45 minutes | £35 |
| NATURAL NAIL OVERLAY (colour/french) | 75 minutes | £40 |
| INDIVIDUAL TIP/SCULPTURE/REPAIR | 20 minutes | £10 |
| SOAK OFF, TIDY AND POLISH | 45 minutes | £25 |
| PEDICURE WITH GEL OVERLAY ON TOES | 75 minutes | £45 |

BioSculpture Gel is a nail treatment applied as a coating to your own nails to strengthen and condition your natural nails.



CREATIVE
aesthetics

01483 773113 / 01483 773127

07896 255017

tscannella@ntlworld.com

86 Maybury Road | Woking | Surrey | GU21 5JH

www.creativeaesthetics.co.uk